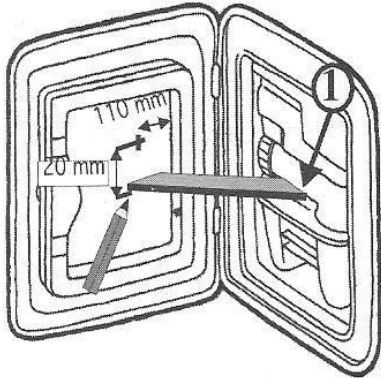


Installation instructions: SOG-toilet extractor

Type D for C-400 / C-402C C-402X / C-403L
for tall models
(with storage compartment for toilet fluids)
for C-400 without sanitary fluid compartment look
supplementary sheet

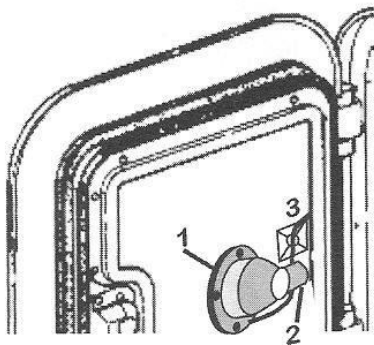
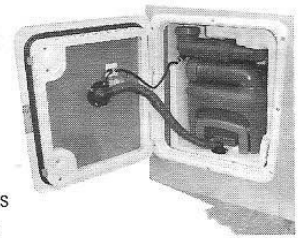


Important:

Follow these installation instructions and do not experiment with alternatives.

Identify location of hole for vent

Precise location is only required if the waste tank sits a long way towards the front of the service compartment as shown on the drawing. This is to ensure that the service hatch closes properly (especially also with toilets having an additional water tank). If there is more room the extractor can be located a little higher. To locate the precise position place a (flat) ruler on the waste tank (1) and then close the service hatch until it contacts the ruler and mark the lower point with a pencil. From this point measure and mark a point 20 mm above and about 110 mm from the inner frame towards the centre. Drill the hole in the hatch with a core drill or hole saw: 36-37 mm diameter

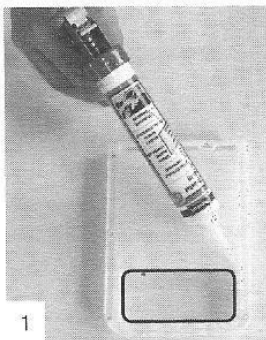


Fitting the extractor

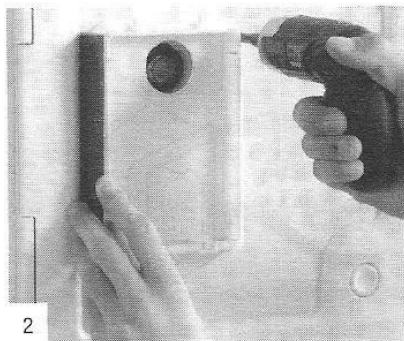
Careful SEALING is essential to prevent odours penetrating into the service compartment through gaps and then into the vehicle:

Apply silicone to the hole; if there are two sheets of metal on top of each other on the outside of the service hatch they must be well sealed at the hole. Insert extractor (1), hose connector (2) must point slightly upward and always towards the hinged side of the door. Fasten extractor with the 4 x 3.5 x 16 mm screws. Fit cable holder (3) (to prevent strain on the cable) above the extractor.

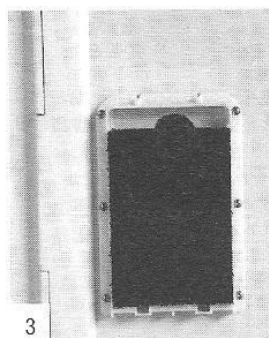
Installation of Filter Casing



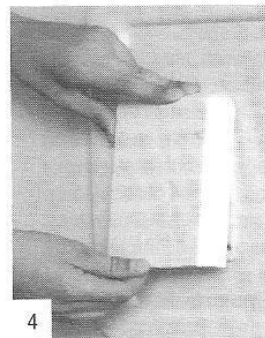
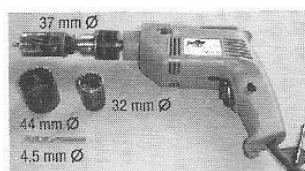
Apply a line of silicon caulking to the back side of the filter casing around the fan discharge opening



The filter casing must be installed at least 5mm from the door frame. Hold 5 mm of flats between the door frame and the filter casing as an assembly support. Insert and tighten screws, 3.5 x 16 VA, without pre-drilling into aluminum sheet. Apply a line of silicon caulking to the back side of the filter casing around the fan discharge opening.



Insert filter into designated setting



Place cover plate on top Pull lower section forward slightly. Push cover plate from top to bottom and snap into place. Insert screws and tighten slightly while pressing on cover plate.

